

Cyclone in the “Malvinas Islands” and the Spiral Galaxies

Ricardo Gobato^{1,*}, Abhijit Mitra², Alireza Heidari³, Marcia Regina Risso Gobato¹

¹Green Land Landscaping and Gardening, Seedling Growth Laboratory, 86130-000, Parana, Brazil.

²Department of Marine Science, University of Calcutta, 35 B. C Road, Kolkata, 700019, West Bengal, India.

³Faculty of Chemistry, California South University, 14731 Comet St. Irvine, CA 92604, USA.

Corresponding author:

Ricardo Gobato, Green Land Landscaping and Gardening, Seedling Growth Laboratory, 86130-000, Parana, Brazil.

Keywords:

Spiral Galaxies, Falkland Islands, Extratropical Cyclone, Argentina, Chile, *Tierra del Fuego*, Land of Fire, Chubut, Santa Cruz.

Received: May 21, 2022

Accepted: Aug 23, 2022

Published: Sep 30, 2022

DOI: 10.14302/issn.3070-3379.jwc-22-4202

Abstract

A subtropical cyclone is a weather system that has some characteristics of a tropical cyclone and some characteristics of an extratropical cyclone. They can form between the equator and the 50th parallel. In mathematics, a spiral is a curve which emanates from a point, moving farther away as it revolves around the point. The characteristic shape of hurricanes, cyclones, typhoons is a spiral. There are several types of turns, and determining the characteristic equation of which spiral the Extratropical Cyclone (EC) fits into is the

goal of the work. The study demonstrates a double spiral for the extratropical cyclone, similarly Lindblad (1964) demonstrates a double spiral, to demonstrate the structure of spiral galaxies. Despite the data obtained in the EC that passed through the southern tip of South America west and east of the Falklands Islands, everything indicates that the short occurrence ECs indicate the double spiral structure, but with the structure of a Cote's double spiral.

Introduction

A cyclone is a large air mass that rotates around a strong center of low atmospheric pressure, counterclockwise in the Northern Hemisphere and clockwise in the Southern Hemisphere as viewed from above (opposite to an anticyclone). [1], [2], [3]

A subtropical cyclone is a weather system that has some characteristics of a tropical cyclone and some characteristics of an extratropical cyclone. They can form between the equator and the 50th parallel. [1], [4], [5], [6], [7], [8]

These storms usually have a radius of maximum winds that is larger than what is observed in purely tropical systems, and their maximum sustained winds have not been observed to exceed about 32 m/s (64 knots). Subtropical cyclones

sometimes become true tropical cyclones, and likewise, tropical cyclones occasionally become subtropical storms. Subtropical cyclones in the Atlantic basin are classified by their maximum sustained surface winds: Subtropical depressions have surface winds less than 18 m/s (35 knots), while subtropical storms have surface winds greater than or equal to 18 m/s. [2], [9], [10], [11], [12]

Tropical cyclones are compact, circular storms, generally some 320 km (200 miles) in diameter, whose winds swirl around a central region of low atmospheric pressure. The winds are driven by this low-pressure core and by the rotation of the Earth, which deflects the path of the wind through a phenomenon known as the Coriolis force. As a result, tropical cyclones rotate in a counterclockwise (or cyclonic) direction in the Northern Hemisphere and in a clockwise (or anticyclonic) direction in the Southern Hemisphere. [10], [11], [12], [13], [14], [15]

The occurrence of cyclones is relatively common for the region at this time of year, but the recent phenomenon has been exacerbated by other meteorological and atmospheric factors. This phenomenon, with this feature to lower the pressure inside quickly generates very strong winds and so that name of explosive cyclones. [6], [7], [8], [9], [10] For large-scale occurs, the subtropical cyclones influence and are influenced by the weather and other atmospheric phenomena point of view, the call synoptic condition.

In mathematics, a spiral is a curve which emanates from a point, moving farther away as it revolves around the point. [16], [17], [18], [10], [19] The characteristic shape of hurricanes, cyclones, typhoons is a spiral [20], [21], [22], [23], [24], [25], [26]. There are several types of turns, and determining the characteristic equation of which spiral the “cyclone bomb” (CB) [27] fits into is the goal of the work.

News

A large and powerful extratropical cyclone with an aspect that impressed today in satellite images was acting during this Wednesday in the Atlantic Ocean east

of the provinces of Tierra del Fuego, Chubut and Santa Cruz, in Argentina, and over the Falkland Islands. This cyclone caused strong winds in the Patagonia region with wind gusts in some points approaching 100 km/h (62.1371 mi/h, 53.9957 knots). Mount Pleasant Airport, in the Falklands, had an atmospheric pressure of 985 hPa with rain showers and wind gusts of around 80 km/h (49.7097 mi/h, 43.1966 knots). (Adapted Authors) [3]

The extratropical cyclone at the height of the Falklands had a minimum central pressure of 970 hPa on Wednesday morning, so it is an intense and deep system. It is not an unusual event, since around Antarctica there is a so-called belt of low pressure and more intense cyclones are common in places further south of the Atlantic. (Adapted Authors) [3]

In regions closest to the cyclone, such as Patagonia, gusts of wind that will reach speeds close to 100 km/h have already been recorded. Meanwhile, Mount Pleasant Airport, recorded rain showers amid a rain, and wind in the Falklands, of 985 hPa. According to MestSul, thousands of miles from the Brazilian south, the cyclone will be responsible for a friar in the southern states. As a result, Rio Grande do Sul, Santa Catarina and Paraná can locally rain heavily and isolated storms in several regions, between today and tomorrow. [3]

Analysis of Satellite Images and Synoptic Charts

The Figures (3-6) shows the evolution of temperature (θ) in ($^{\circ}\text{C}$) as a function of time (t) in hours - hourly, of the subtropical cyclone that passed west and north of the Maldives Islands (Falklands Islands), from March 9, 2022 at 10:40 (UTC), to 5:40 (UTC) on March 10, 2022.

The ellipsoid shape of the subtropical cyclone is verified at 10:40 (UTC) on March 09, 2022 at 13:40 (UTC), when it passes between the south of Argentina, on the east coast, and the west of the Islands of Falklands. At 14:40 (UTC) it becomes spherical, already north of the Falklands Islands until 18:40, where from 19:40 on March 9th until 05:40 on the 10th it remains ellipsoid. Its ellipsoid shape whose eccentricity increases as it is pushed - pressed - by the high pressure area

coming from the Amazon region, which crosses Paraguay, Mato Grosso, Mato Grosso do Sul and southern Brazil, entering the Atlantic Ocean towards the southeast. The cyclone nucleus presents the form of a double spiral,

Figures (1) (2) and (9), in the same way Figure (8) of the study of the spiral of the galaxies of Lindblad, (1964) [30]. This spiral is denoted from Cote's Spiral Gobato et al. (2000) [11], [13], [15].

The EC core (Bomb Cyclone) forms in the extreme south of Chile/Argentina, Punta Arenas region, Ushuaia, respectively. With an initial atmospheric pressure of 990mb, on March 08, 2022, 12:00 (UTC), coordinates xxxx, moving northwest of the Atlantic Ocean. Passing between this "strait" of the extreme south of South America and the Falklands Islands, without any storm in the continental region.

The core of cyclone at coordinates 50° 17' 11"S 60° 47'41"W on March 9 12:00, at 49° 59' 13"S 60° 37' 58"W. The one on March 10, 00:00 (UTC), travels 35.31 km (21.9406 miles) in 12 hours, with an average speed of 2.9425 km/h (1.8284 miles/h, 1.5888 knots), that is, 0.82 m/s. Surprisingly after that its speed increases exponentially in 12h, after the cyclone leaves the "strait" between the mainland and the Falklands Islands.

The cyclone travels 592.12 km (367,9263 miles) in 12 hours, with an average speed of 49.3433 km/h (30,6605 miles/h, 26,6433 knots) , that is, 13.71 m/s, moving from 49° 59' 24"S 60° 37' 48"W at north of the Falklands, March 10, 2022 00:00 (UTC).

Data in Table (1) were obtained by analyzing the Figure (7).

Cotes's Spiral

As stated in the introduction the characteristic shape of hurricanes, cyclones, typhoons is a spiral. In mathematics, a spiral is a curve which emanates from a point, moving farther away as it revolves around the point. [33], [34], [27], [35], [36], [37], [38], [39]

After an analysis of the different types of spirals , it was found that the shape that came closest to the EC spiral, Figure (1), is a "Cotes's Spiral." [33], [34], [27],

[35], [36], [37], [38], [39] It was determined the mathematical equation of the shape of the extratropical cyclone, being in the shape of a spiral called "Cotes's Spiral" [27]

A spiral that gives the solution to the central orbit problem under a radial force law

$$\ddot{r} = -\mu[r]^{-3}\dot{r} \tag{1}$$

where μ is a positive constant. There are three solution regimes,

$$r = \begin{cases} A \sec(k\theta + \epsilon), \text{ where } k^2 = 1 - \frac{\mu}{h^2} \text{ when } \mu < h^2 \\ A \cosh(k'\theta + \epsilon), \text{ where } k'^2 = \frac{\mu}{h^2} - 1 \text{ when } \mu > h^2 \\ A/(\theta + \epsilon), \text{ when } \mu = h^2 \end{cases} \tag{2}$$

Where A and ϵ are constants, and h is the specific angular momentum [26]. The case $\mu > h^2$ gives an epispiral, while $\mu = h^2$ leads to a hyperbolic spiral.

Analyzing the shape of the Spiral shape called "Cotes's Spiral" for $\mu < h^2$. [24, 25], it appears that adding two constants to Equation (3) makes the necessary adjustments for the Isobaric ones.

In the case of CB, the spiral that gives the solution to a radial force law is given by Equation (1):

$$\ddot{r} = -\mu[r]^{-3}\dot{r} \tag{3}$$

where: $r = A \sec(k\theta + \epsilon)$, where $k^2 = 1 - (\mu/h^2)$, when $\mu < h^2$.

An adjustment in Equation (3) is necessary to obtain the $B \neq 0$ graph of Figure (7). Then, adding the constants C and where for $\mu < h^2$.

$$r = B.A \sec(k\theta + \epsilon) + C \tag{4}$$

$$\text{Where } k^2 = 1 - (\mu/h^2) \tag{5}$$

The datas the of of the points coordinates collected from Figure (1), (2) and (7), in Longitude and Latitude, they were obtained [29], [32]. With the location of the low pressure center (986 mbar) of the EC at 20°S - 20°W, at March 9 00:00 UTC, and the low pressure center of 972 mbar, March 9 12:00UTC.



Figure 1. Satellite image of Powerful extratropical cyclone over the Falkland Islands in this Wednesday, March 9, 2022 am. Source: [28], [29].

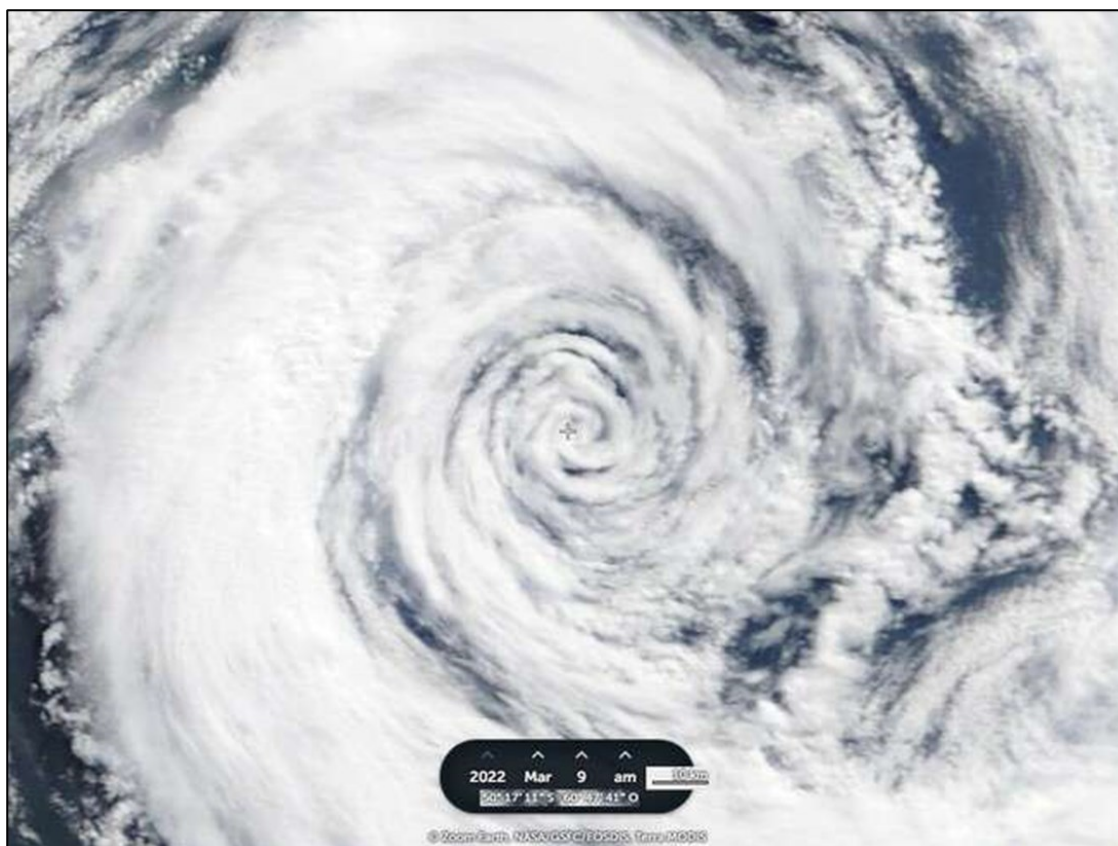


Figure 2. The extratropical cyclone at the height of the Falklands had a minimum central pressure of 970 hPa on Wednesday morning, so it is an intense and deep system. It is not an unusual event, since around Antarctica there is a so-called belt of low pressure and more intense cyclones are common in places further south of the Atlantic. [3], [30]

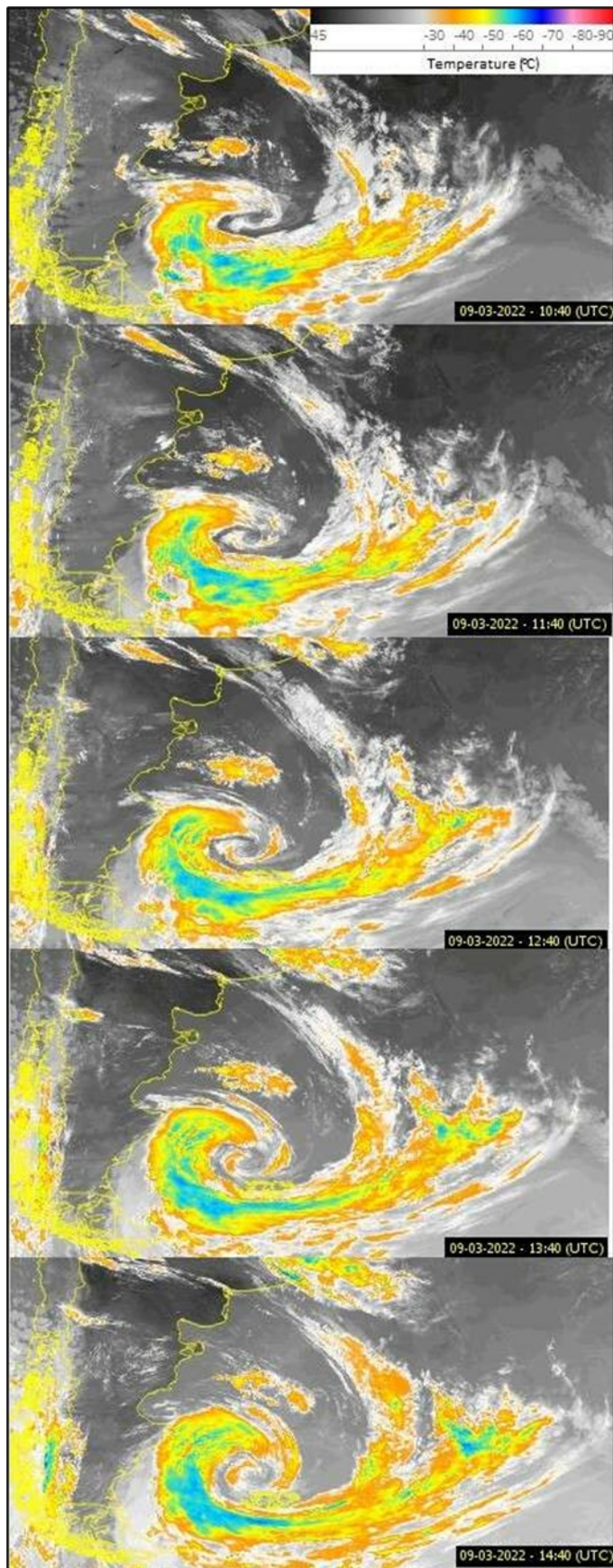


Figure 3. Enhanced satellite images (Adapted) taken from the REDEMET website [] for cloud temperature data between March 09, 2022 10:40 UTC to 14:40 UTC. [31]

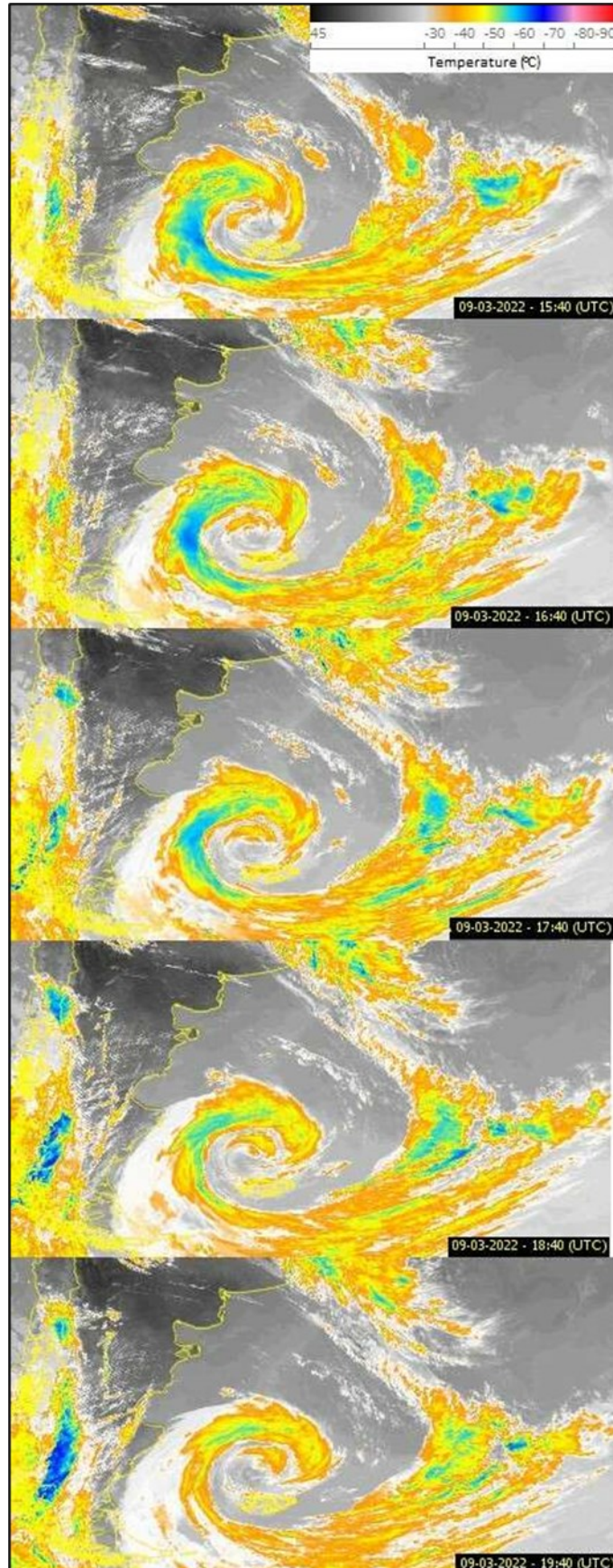


Figure 4. Enhanced satellite images (Adapted) taken from the REDEMET website [] for cloud temperature data between March 09, 2022 15:40 UTC to 19:40 UTC. [31]

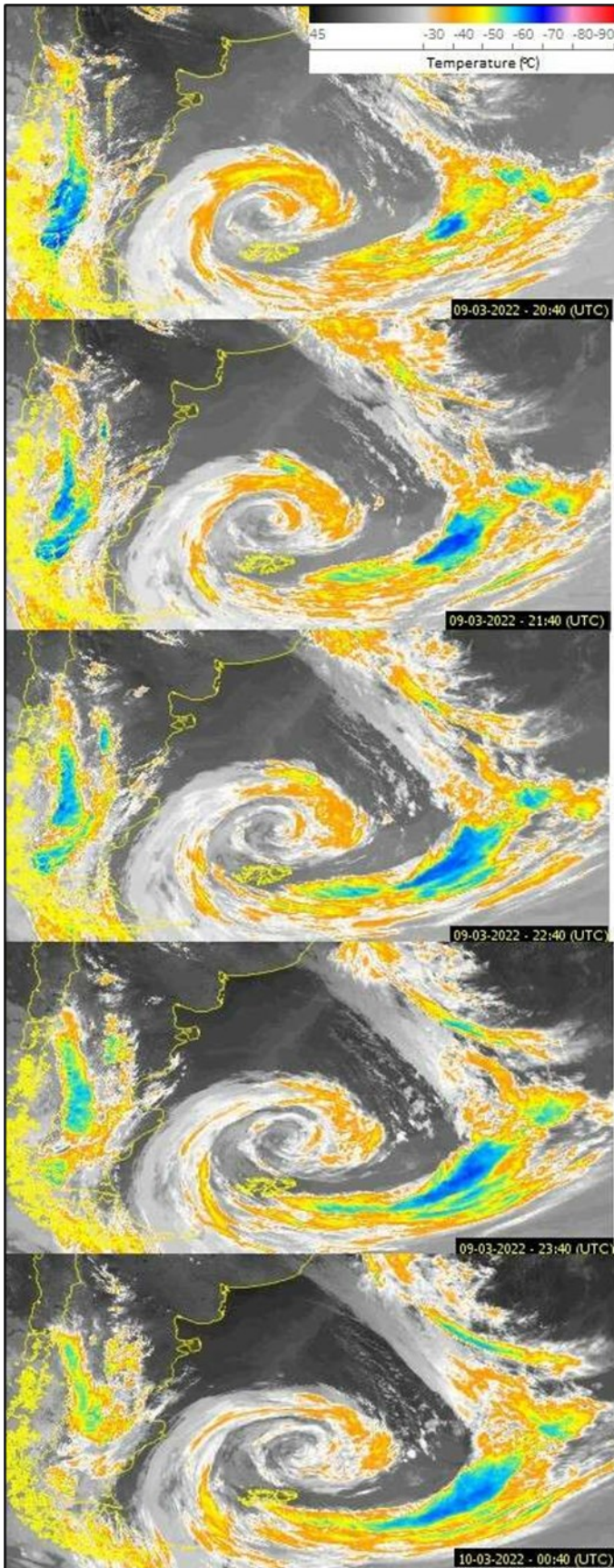


Figure 5. Enhanced satellite images (Adapted) taken from the REDEMET website [] for cloud temperature data between March 09, 2022 20:40 UTC to March 10, 2022 00:40 UTC. [31]

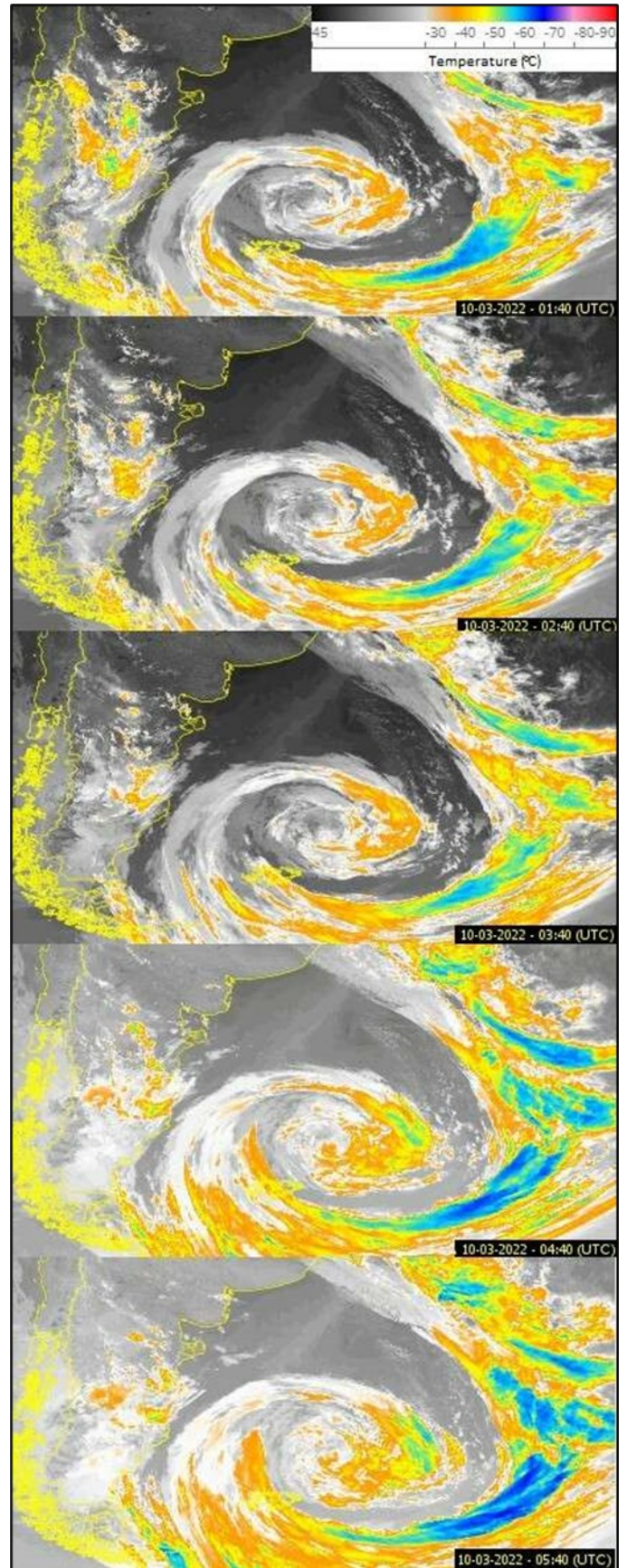


Figure 6. Enhanced satellite images (Adapted) taken from the REDEMET website for cloud temperature data between March 10, 2022 01:40 UTC to March 10, 2022 05:40 UTC. [31]

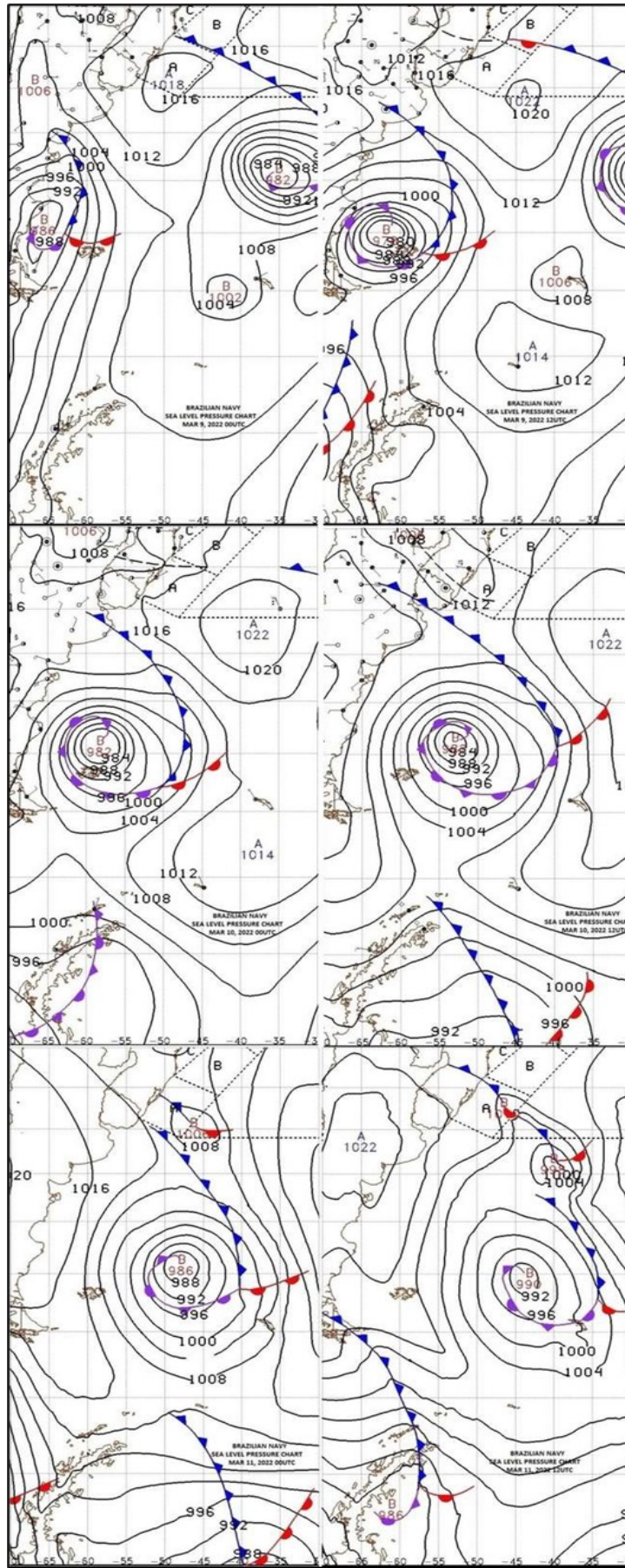


Figure 7. The Synoptic Letters, from March 9, 2022, at 00:00 UTC to March 11, 2022, at 12:00 UTC, from Navy Hydrography Center, Brazil's navy (Adapted Authors). [32]

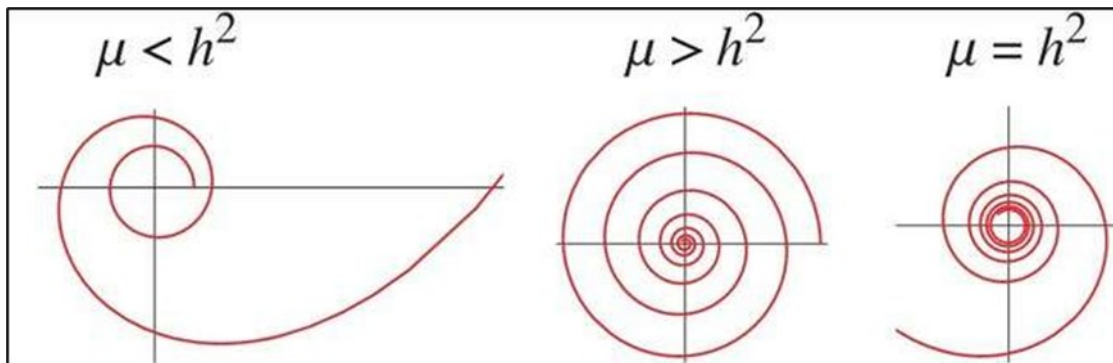


Figure 8. Represents the three possible shapes of the "Cote's Spiral". [33], [34], [27], [35], [36], [37], [38], [39]

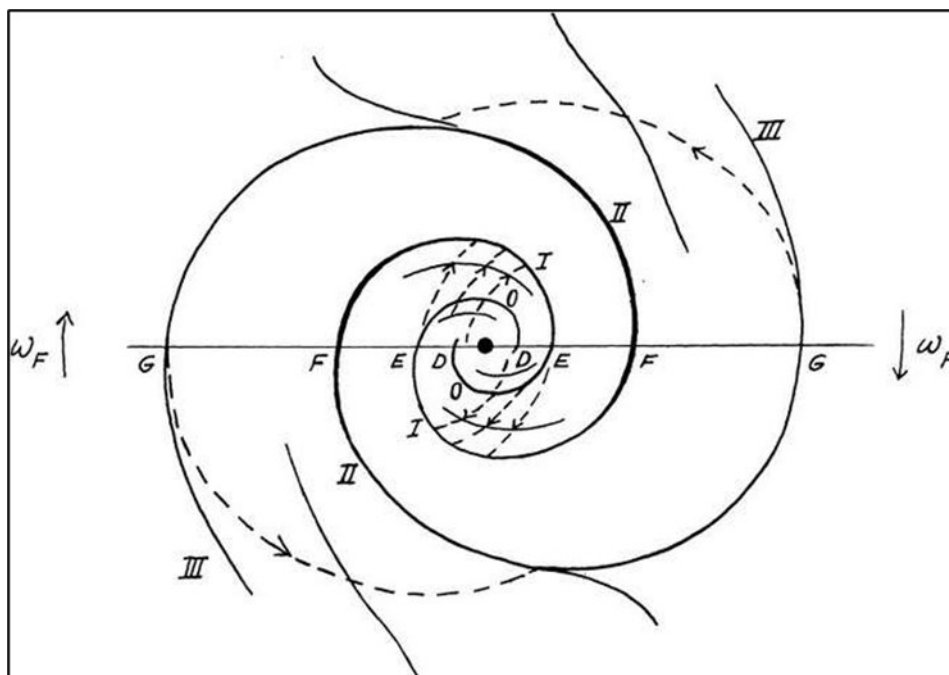


Figure 9. "The application to the permanence of the spiral structure in galaxies arises because the outermost part of an arm will be attracted by, and will tend to become assimilated with, the neighbouring parts of the inner structure. In an analogous way matter close to the nucleus will have a tendency to be assimilated in an outward motion with the inner parts of the spiral structure. The two regions of circulation is given here. We may suppose that there are two points F in the structure where the angular motion ω_F is equal to the local circular angular velocity. We can introduce a coordinate system which follows ω_F centre. The successive inter-sections with the diameter through the points F are indicated by the letters D, E, F, G. We make the supposition that, as long as the mass of III is small, the motion of particles in the arcs II is circular motion in the general gravitational field. The gravitational force from the interior spiral structure will not appreciably change the radial direction of the general field, of which it will form an integral part.", (Lindblad, 1964). [30]

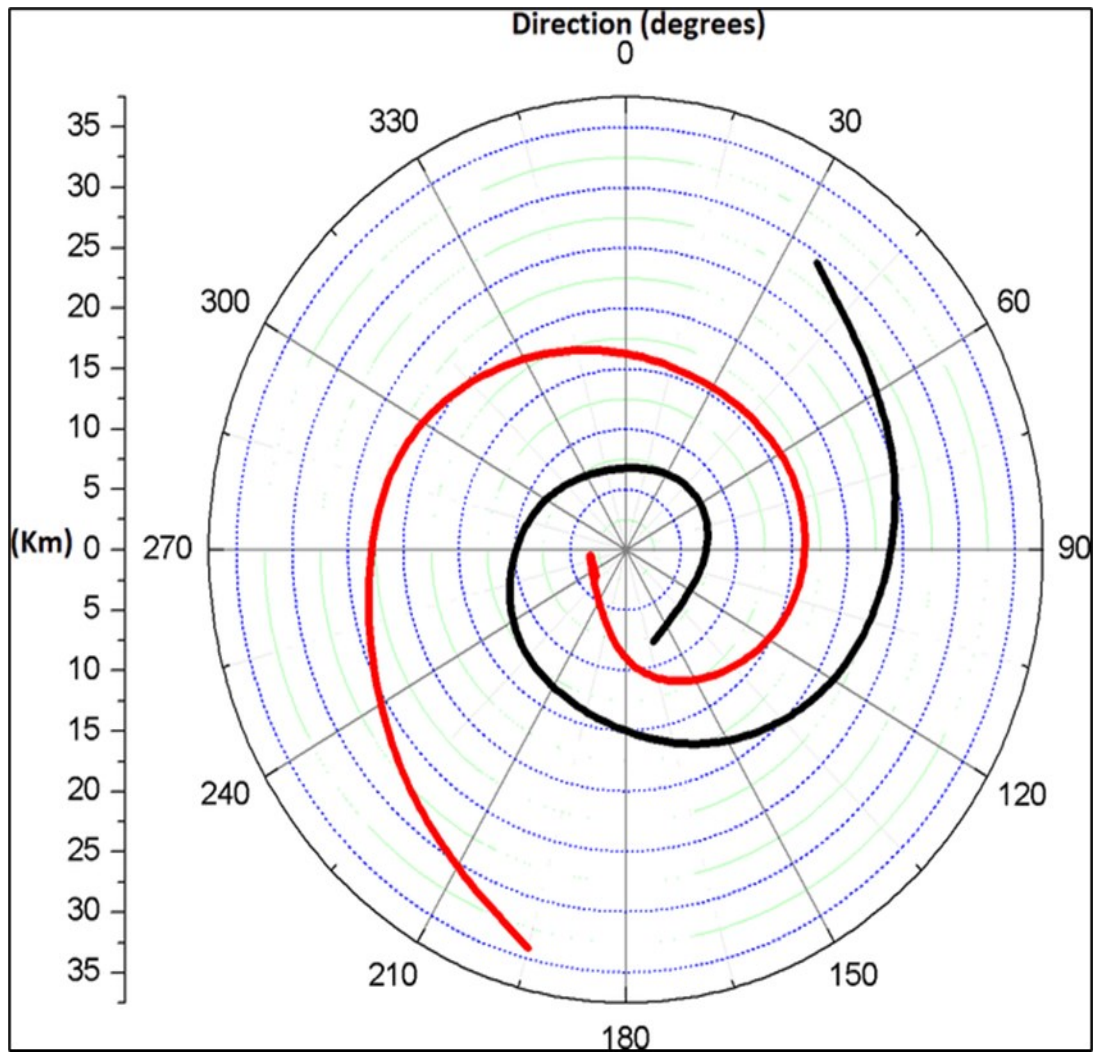


Figure 10. Graph built with the data collected from Figures (1) and (2). The graphic depicts two spirals, constructed with the coordinates of the atmospheric pressure gradients by the wind speed tangent in the vortex of the extratropical cyclone that passed north of the Falklands Islands. Source: Authors.

Table 1. Cyclone pressure(P) (mbar) in time hour(h) (UTC), D(day) between March 08 and 11, 2022 from 12:00 to 12:00.

D(day)	08	09	09	10	10	11	11
h (hour)	12:00	00:00	12:00	00:00	12:00	00:00	12:00
P(pressure)	990	986	978	982	982	986	990

In this Figure (9) the shape of the EC is represented, using as a parameter the isobaric ones observed in Figures (1) and (2).

An “explosive extratropical cyclone” is an atmospheric phenomenon that occurs when there is a very rapid drop in central atmospheric pressure. This phenomenon, with its characteristic of rapidly lowering the pressure in its interior, generates very intense winds and for this reason it is called explosive cyclone. It was determined the mathematical equation of the shape of the extratropical cyclone, being in the shape of a spiral called “Cotes’s Spiral.” In the case of EC, which formed in the south of the Atlantic Ocean, and passed through the south coast of Argentina and Falkland Island.

The Figures (3-6) show the temperatures of the clouds and the surface near the low pressure center of the EC. Enhanced satellite images taken from the REDEMET website [31] for cloud temperature data between March 09, 2022 10:40 UTC to March 10, 2022 05:40 UTC. The core maintains a cloud temperature of approximately 20 °C to -20 °C, with its near edge having a gradient of -50 °C, -60 °C, -50 °C, as it moves away on the distance from the core. Only from day 11, that its extreme edge ranging from -50 °C to -70 °C, Figures (3-6).

The temperature in the center of the EC is approximately 20 °C at 00:00 UTC, March 9, 2022, of at 12:20 UTC, in the low pressure center of the EC, the temperature varies from 20 °C to -30 °C, indicating that the CE increases in size and further tapers its core, sucking a great amount of steam to high altitudes of water where it condenses quickly.

Figure (8) to demonstrate the structure of spiral galaxies demonstrates a double spiral of Lindblad (1964) [30].

The study demonstrates a double spiral for the extratropical cyclone, similarly a double spiral of Lindblad (1964) [30].

The Figure (9) show the graphic depicts two spirals, constructed with the coordinates of the atmospheric pressure gradients by the wind speed tangent in the vortex of the extratropical cyclone that passed north of

the Falklands Islands.

The Figure (10) represents the three possible shapes of the Cote’s spiral. The data indicated that the EC presents the form of the equation (4), Gobato et al. [27]

Conclusions

The subtropical cyclone originates on March 08 at 12:00 UTC and disappears on March 11 at 12:00 UTC, that is, in approximately 72 hours its climatic influence takes place in the extreme south of South America, and under the Falklands, heading west.

The image shows the location in latitude and longitude coordinates, 50° 36’ 36” S and 61° 09’ 00” W, respectively, of the cyclone core, at 09:00 March 2022. Its core is approximately 165 km (102,652 miles) in diameter, but its catchment area is approximately 1,900,000 km² (733,594,101 square miles).

The study demonstrates a double spiral for the extratropical cyclone, similarly Lindblad (1964) demonstrates a double spiral, Figure (8) to demonstrate the structure of spiral galaxies.

Despite the data obtained in the extratropical cyclone (EC) that passed through the southern tip of South America west and east of the Falklands Islands, everything indicates that the short occurrence ECs indicate the double spiral structure, like Lindblad (1964), but with the structure of a Cote’s double spiral.

References

1. “Cyclone,” *Creative Commons. CC BY-SA 3.0*, 2022.
2. “Glossary of meteorology: Cyclone,” 2020.
3. R. UOL, “Ciclone se aproxima do sul e derruba temperaturas; mínima pode chegar a 7°C,” *UOL (Universo OnLine)*, 2022.
4. C. Landsea, “Subject: (A6) what is a sub-tropical cyclone?,” 2009.
5. D. Armentrout and P. Armentrout, *Tornadoes, Series: Earth’s Power*. Rourke Publishing (FL) ISBN: 1600442331, 9781600442339., 2007.
6. R. Edwards, “The online tornado faq,” *Storm Prediction Center. National Oceanic and Atmospheric*

- Administration, 2006.
7. H. B. Bluestein, *Severe Convective Storms and Tornadoes: Observations and Dynamics*, Series: Springer Praxis Books. Springer-Verlag Berlin Heidelberg, ISBN: 978-3-642-05380-1, 978-3-642-05381-8., 2013.
 8. R. Gobato, M. R. R. Gobato, and A. Heidari, "Evidence of tornadoes reaching the countries of rio branco do ivai and rosario de ivai, southern brazil on june 6, 2017," *Climatol Weather Forecasting*, vol. 6, no. 4.
 9. R. Gobato, M. R. R. Gobato, and A. Heidari, "Evidence of tornadoes reaching the countries of rio branco do ivai and rosario de ivai, southern brazil on june 6, 2017," *Sci Lett*, vol. 7, no. 1.
 10. R. Gobato, M. R. R. Gobato, and A. Heidari, "Storm vortex in the center of paran state on june 6, 2017: A case study," *Sumerianz Journal of Scientific Research*, vol. 2, no. 2.
 11. R. Gobato, A. Heidari, A. Mitra, and M. R. R. Gobato, "Vortex cotes's spiral in an extratropical cyclone in the southern coast of brazil," *Archives in Biomedical Engineering and Biotechnology*, vol. 4, no. 5.
 12. R. Gobato and A. Heidari, "Vortex hits southern brazil in 2020," *J Cur Tre Phy Res App*, vol. 1, no. 2.
 13. a. A. H. R. Gobato, A. Mitra, and M. R. R. Gobato, "Cotes's spiral vortex in extratropical cyclone bomb south atlantic oceans," *Aswan University Journal of Environmental Studies (AUJES)*, vol. 1, no. 2.
 14. R. Gobato, A. Gobato, and D. F. G. Fedrigoi, "Study of tornadoes that have reached the state of paran," *Parana Journal of Science and Education*, vol. 2, no. 1.
 15. R. Gobato, A. Heidari, A. Mitra, and M. R. R. Gobato, "Vortex cotes's spiral in an extratropical cyclone in the southern coast of brazil," *Archives in Biomedical Engineering and Biotechnology – ABEB*, vol. 4, no. 5.
 16. D. L. Vossle, *Exploring Analytical Geometry with Mathematica*. Academic Press, ISBN: 9780127282558, 0127282556, 1999.
 17. J. Casey, *A treatise on the analytical geometry of the point, line, circle, and conic sections, containing an account of its most recent extensions, with numerous examples*. University of Michigan Library, ISBN: 1418169897, 9781418169893, 2001.
 18. R. Sharipov, *Course of Analytical Geometry*. Bashkir State University (Russian Federation). ISBN: 978-5-7477-2574-4., ?
 19. M. de Len and P. Rodrigues, *Methods of Differential Geometry in Analytical Mechanics*, Series: Mathematics Studies. Elsevier Science Ltd, ISBN: 0444880178, 9780444880178, 1989.
 20. T. Vasquez, *Weather Forecasting Handbook (5th Edition)*. Weather Graphics Technologies, ISBN: 0970684029, 9780970684028, 2002.
 21. H. B. Bluestein, L. F. Bosart, and H. B. Bluestein, *Synoptic—Dynamic Meteorology and Weather Analysis and Forecasting: A Tribute to Fred Sanders*, Series: Meteorological Monographs 33, No. 55. American Meteorological Society, ISBN: 978-1-878220-84-4, 978-0-933876-68-2., 2008.
 22. P. Santurette and C. Georgiev, *Weather Analysis and Forecasting: Applying Satellite Water Vapor Imagery and Potential Vorticity Analysis*. Academic Press, ISBN: 0126192626, 9780126192629, 9780080455266, 2005.
 23. R. Gobato and A. Heidari, "Cyclone bomb hits southern brazil in 2020," *Journal of Atmospheric Science Research*, vol. 3, no. 3.
 24. J. P. Rafferty, *Storms, Violent Winds, and Earth's Atmosphere. Series: Dynamic Earth*. Britannica Educational Publishing, ISBN: 1615301143, 9781615301140, 1615301887, 9781615301881, 2010.
 25. R. Krasny, "A study of singularity formation in a vortex sheet by the point vortex approximation," *J. Fluid Mech*, no. 167.
 26. P. G. Saffman, *Vortex dynamics. Series: Cambridge monographs on mechanics and applied mathematics*. Cambridge University Press, 1992.
 27. R. Gobato, A. Heidari, A. Mitra, and M. R. R. Gobato, "Cotes's spiral vortex in extratropical cyclone bomb south atlantic oceans," *Annual Review of Astronomy and Astrophysics*.

28. R. Gobato and M. S. F, "Alternative method of rgb channel spectroscopy using a ccd reader," *Ciência e Natura*, no. 39.
29. Z. Earth, "Zoom earth," 2022.
30. B. Lindblad, "On the circulation theory of spiral structure," *ASTRO- PHYSICA NORVEGICA*, no. 12.
31. "Imagens de satélite," *REDEMET Rede de Meteorologia do Comando da Aeronáutica (Brazil Air Force Command Meteorology Network)*, 2022.
32. "Navy hydrography center," *Brazil's navy. Synoptic Letters*, 2021.
33. J. D. Anderson, *Fundamentals of Aerodynamics*. McGraw-Hill Companies, ISBN: 9780070016569,0070016569, 1984.
34. E. W. Weisstein, *Cotes's Spiral*. MathWorld–A Wolfram Web Resource; <https://mathworld.wolfram.com/CotesSpiral.htm>, 2022.
35. E. T. Whittaker, *A Treatise on the Analytical Dynamics of Particles and Rigid Bodies: With an Introduction to the Problem of Three Bodies*. NewYork: Dover, p. 83, 2022.
36. R. Fischer, *Fibonacci Applications and Strategies for Traders: Unveiling the Secret of the Logarithmic Spiral*. ISBN: 0471585203,9780471585206, 1093.
37. A. Toomre, "Theories of spiral structure," *Annual Review of Astronomy and Astrophysics*, vol. 15, no. 1.
38. J. H. Oort, *The Spiral Structure of Our Galaxy*, Series: *International Astronomical Union*. W. Becker, G. Contopoulos (eds.); Union Astronomique Internationale 38, Springer Netherlands, ISBN: 978-94-010-3277-3,978-94-010-3275-9, 1970.
39. M. V. Nezlin and E. N. Snezhkin, *Rossby Vortices, Spiral Structures, Solitons: Astrophysics and Plasma Physics in Shallow Water Experiments*, Series: *Springer Series in Nonlinear Dynamics*. Springer-Verlag Berlin Heidelberg, ISBN: 978-3-642-88124-4,978-642-88122-0, 1993.